

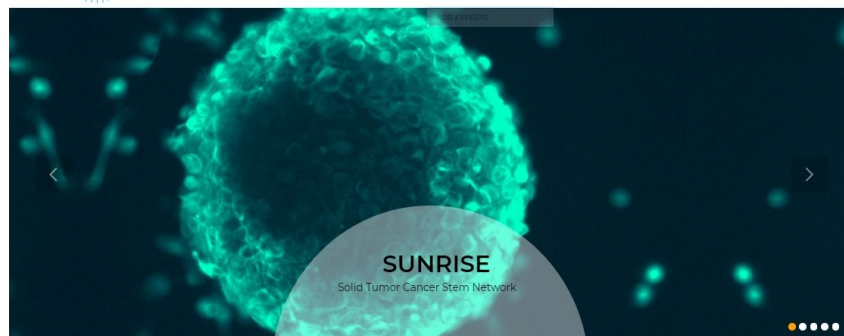


SUNRISE NEWSLETTER - April 2020



NEWSLETTER | JOIN SUNRISE | DONATE

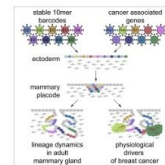
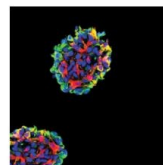
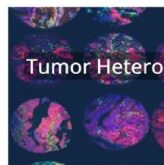
HOME WHAT ARE CSCs MEETING EDUCATION NEWSROOM ABOUT



RT @AcadSciences: #FakeNews #COVID19 Non, le coronavirus n'est pas issu d'une tentative de mise au point d'un vaccin anti-VIH ! L'analyse de la séquence génétique du #coronavirus démontre qu'elle ne peut pas être le résultat d'une construction humaine mais provient de mutations naturelles. [twitter.com/institutpasteu...](https://twitter.com/institutpasteur)

About 5 days ago from solid tumor cancer stem cell network's Twitter via Twitter for iPhone

NEWSROOM



BREAKING NEWS

We are pleased to announce the [release of our new website](#), designed with a fresh new look and user-friendly navigation and updated with the latest information about our Network!

Even if in light of COVID-19, many conferences are being cancelled or postponed, we are continuing new event postings in our website, newsletters and on Twitter.

We encourage you send us your updates (publications, job offers or available positions) as well as your comments or suggestions !



SUNRISE Training session - Lille 2020

In partnership with the Cancéropôle Nord-Ouest (CNO), we are organizing a [training course "Stem cells in solid tumors: from biology to therapy"](#), which will take place in Lille on

December 17-18, 2020. The online registration will open soon !



Postdoctoral & Postdoc Jobs

Postdoctoral Position available at **Inserm U1103**, **CNRS UMR 6293**, Université Clermont-Auvergne.
Contact: David VOLLE. More information ([HERE](#));
contact : david.volle@inserm.fr



Cutting-edge research on CSCs

The aim of this Newsletter is to promote the exchange of publications among SUNRISE Members.

Have we missed an important article or publication from your lab ? Please, submit your feedback at contact@sunrise-network.fr

Selected recent publications

[Plasticity of Lgr5-Negative Cancer Cells Drives Metastasis in Colorectal Cancer](#)

[Cell Stem Cell]

[Paracrine Orchestration of Intestinal Tumorigenesis by a Mesenchymal Niche](#)

[Nature]

[Selective Inhibition of Cancer Cell Self-Renewal through a Quisinostat-Histone](#)

[H1.0 Axis](#) [Nat Commun]

[Chemotherapy Exacerbates Ovarian Cancer Cell Migration and Cancer Stem](#)

[Cell-Like Characteristics through GLI1](#) [Br J Cancer]

[Zebrafish Microenvironment Elevates EMT and CSC-Like Phenotype of](#)

[Engrafted Prostate Cancer Cells](#) [Cells]

Selected recent Review

[The Current Markers of Cancer Stem Cell in Oral Cancers](#) [Life Sci]

[Alterations of Cell Cycle Genes in Cancer: Unmasking the Role of Cancer Stem](#)

[Cells](#) [Mol Biol Rep]

Solid Tumor cancer Stem Cell Network
contact@sunrise-network.fr



Cet e-mail a été envoyé à {{ contact.EMAIL }}
Vous avez reçu cet email car vous vous êtes inscrit sur Solid tumor cancer stem cell network.

[Se désinscrire](#)



© 2020 Solid tumor cancer stem cell network